

Self-Suction Centrifugal Pump

SP3/SP

TERAL

60Hz



TERAL INC.

Applications

- General water supply and drainage
- Distribution for industrial water
- Civil engineering work use/agricultural use
- Water pumping and drainage for food/chemical/mining industries

Features

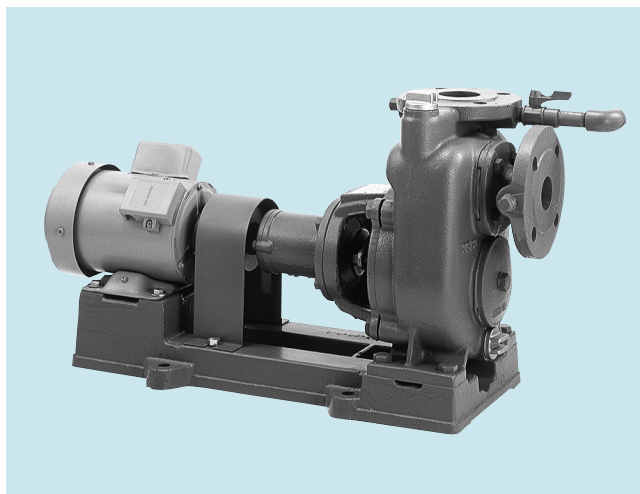
- ① Optimum for drainage of sewage including a small amount of foreign matter because a semi-open impeller is adopted.
- ② Easy to use pump as priming it each time is unnecessary due to superior self-suction performance.

Model type description

SPM3 - 40

① ②

- ① Model SPL3, SPL: Low lifting
 SPM3: Moderate lifting
 SPH3: High lifting
- ② Nominal suction/discharge diameter (40mm)



※Please note that product colors may differ from that in the photo.

Standard specifications

Liquid to be lifted	Liquid quality... tap water/sewage
	Liquid temperature... 0 to 40 °C
Total suction head (20 °C)	SPL3-32, 40...-5m
	SPL3-50/SPM3-40/50
	SPH3-40/50...-7m
	SPL3-65 or more...-6m
Structure	Impeller... Semi-open
	Bearing... Gland packing
	Shaft seal... Sealed ball bearing
Material	Impeller... FC200
	Spindle... SUS403
	Casing... FC200
Motor	Type... Single-phase Open-phase protection type
	Three-phase Totally-enclosed-fan-cooled motor indoor type
	Power... Single-phase/100V (0.4kW or less)
	Three-phase/200/220V
	Synchronous rotation speed... 1800min ⁻¹
Flange standard	JIS 10K flange
Coating color	7.5BG5/1.5

Standard accessories

Motor	1
Common base	1
Mating flange (bolts, nuts and packing attached)	2 sets
Strainer	1
Coupling	1 set
Coupling cover	1
Pump-priming plug	1

Special specifications

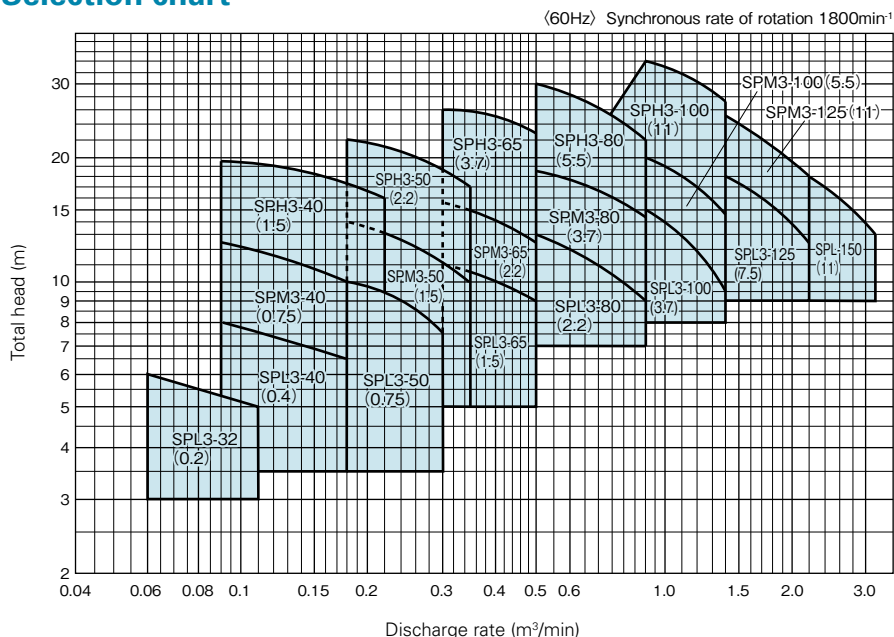
Change of motor	Change of voltage, totally-enclosed-fan-cooled motor indoor type (only for three-phase)
Others	Specification of coating color

※Please note that the outline drawing and others differ from the standard drawing if the special specification is changed.

Special accessories

Sluice valve/check valve/pressure gauge/compound gauge/vacuum gauge/foundation bolt
Control panel

Selection chart



Specifications

●Single-phase

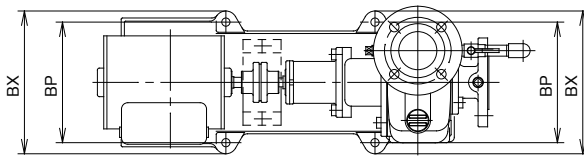
Nominal diameter mm	Model	Output kW	Specification					
			Discharge rate: m ³ /min	Total head m	Discharge rate: m ³ /min	Total head m	Discharge rate: m ³ /min	Total head m
32	SPL3-32	0.2	0.06	6	0.08	5.5	0.11	5
40	SPL3-40	0.4	0.09	8	0.14	7	0.18	6.5

●Three-phase

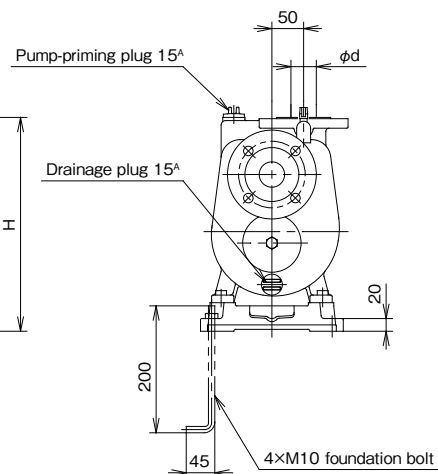
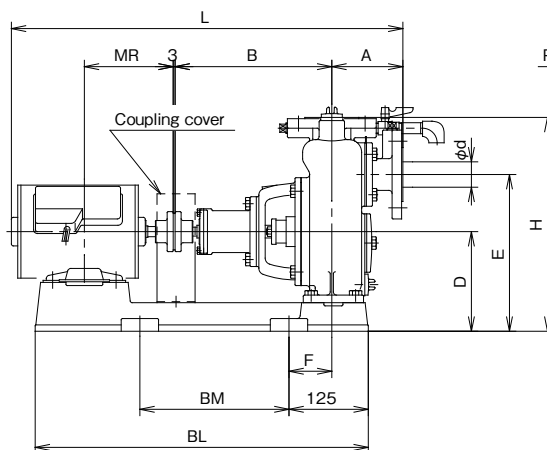
Nominal diameter mm	Model	Output kW	Specification					
			Discharge rate: m ³ /min	Total head m	Discharge rate: m ³ /min	Total head m	Discharge rate: m ³ /min	Total head m
32	SPL3-32	0.2	0.06	6	0.08	5.5	0.11	5
	SPL3-40	0.4	0.09	8	0.14	7	0.18	6.5
40	SPM3-40	0.75	0.09	12.5	0.14	11	0.18	10
	SPH3-40	1.5	0.09	19.5	0.16	18	0.22	16
	SPL3-50	0.75	0.18	10	0.24	9	0.3	7.5
50	SPM3-50	1.5	0.18	14	0.26	12	0.35	10
	SPH3-50	2.2	0.18	22	0.26	20	0.35	17
	SPL3-65	1.5	0.3	11	0.4	10	0.5	9
65	SPM3-65	2.2	0.3	15.5	0.4	14	0.5	12.5
	SPH3-65	3.7	0.3	26	0.4	25	0.5	23
	SPL3-80	2.2	0.5	13	0.7	11	0.9	9
80	SPM3-80	3.7	0.5	18.5	0.7	16.5	0.9	14.5
	SPH3-80	5.5	0.5	30	0.7	26	0.9	22
	SPL3-100	3.7	0.9	15	1.2	12	1.4	9.5
100	SPM3-100	5.5	0.9	20	1.2	17	1.4	14.5
	SPH3-100	11	0.9	34	1.2	30	1.4	27
	SPL3-125	7.5	1.4	18	1.7	16	2.2	12.5
125	SPM3-125	11	1.4	25	1.7	22	2.2	18
	SPL3-150	11	2.2	18	2.8	15	3.2	13

Assembly drawing

●For single-phase



Flange dimensions: JIS 10K thin flange or equivalent

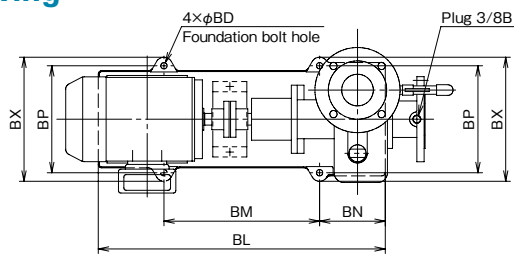


Dimensions

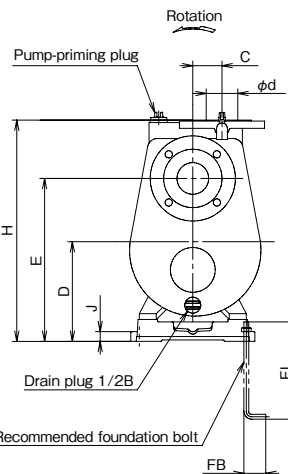
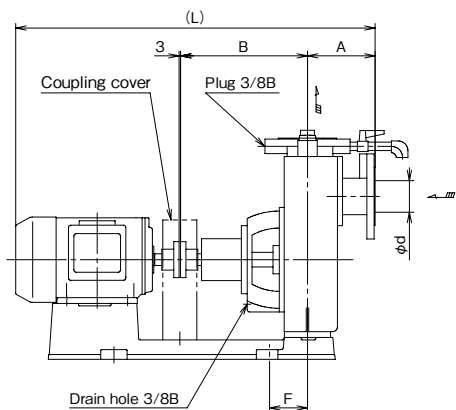
(Unit: mm)

Nominal diameter d	Model	Output kW	Pump							Motor	Common head				Approx. mass kg
			A	B	D	E	F	H	L		MR	BL	BM	BP	
32	SPL3-32	0.2	115	239	145	230	69	315	569	120	480	215	175	210	38
40	SPL3-40	0.4	112	247	157	247	68	337	617	140	525	235	190	225	46

Assembly drawing



Flange dimensions: JIS 10K thin flange or equivalent



Note) Total length dimension and approximate mass may vary slightly depending on the motor manufacturer.

4xFD Recommended foundation bolt

Dimensions

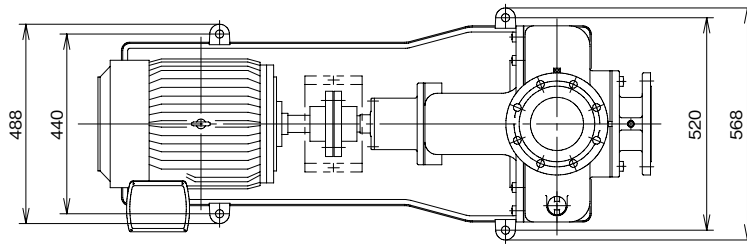
(Unit: mm)

Nominal diameter d	Model	Output kW	Pump								
			A	B	C	D	E	F	H	J	L
40	SPM3-40	0.75	112	269	50	177	277	78	372	20	668
	SPH3-40	1.5	112	261	50	177	287	80	382	20	712
50	SPL3-50	0.75	122	269	60	177	292	78	392	20	678
	SPM3-50	1.5	122	261	60	177	292	80	392	20	722
65	SPH3-50	2.2	122	261	60	205	320	78	420	20	771
	SPL3-65	1.5	139	261	60	177	292	80	412	20	739
	SPM3-65	2.2	139	261	60	205	335	78	455	20	788
80	SPH3-65	3.7	142	300	60	240	380	93	500	30	839
	SPL3-80	2.2	160	261	60	205	345	78	475	20	809
	SPM3-80	3.7	160	300	60	240	375	93	505	30	857
100	SPH3-80	5.5	158	300	60	240	365	93	495	30	924
	SPL3-100	3.7	209	312	50	240	375	105	535	30	918
	SPM3-100	5.5	209	312	50	240	375	105	535	30	987
125	SPH3-100	11	208	350	50	295	450	120	620	40	1169
	SPL3-125	7.5	223	365	60	295	465	124	655	40	1092
	SPM3-125	11	223	365	60	295	465	135	655	40	1199

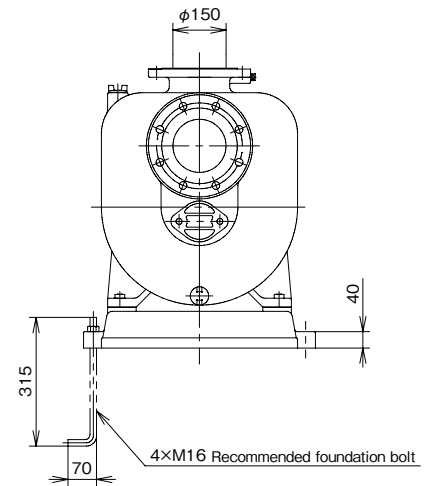
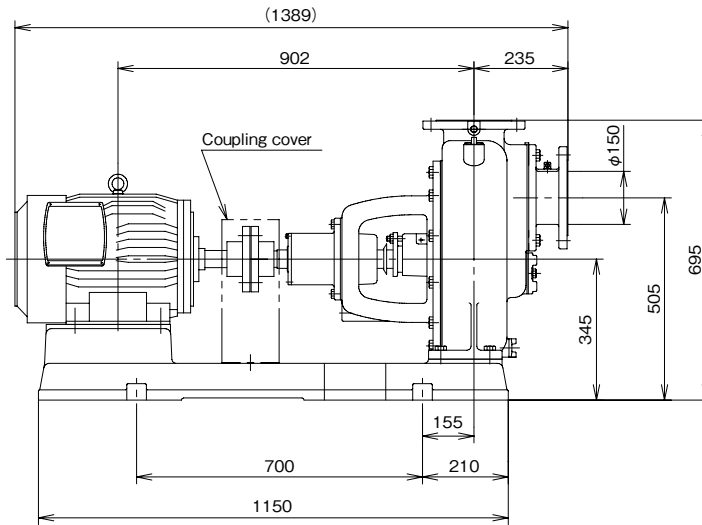
Model	Common head						Foundation bolt			Approx. mass kg
	BD	BL	BM	BN	BP	BX	FB	FD	FL	
SPM3-40	13	545	275	135	210	245	45	M10	200	57
SPH3-40	13	590	320	135	220	255	45	M10	200	71
SPL3-50	13	545	275	135	210	245	45	M10	200	58
SPM3-50	13	590	320	135	220	255	45	M10	200	72
SPH3-50	13	615	345	135	245	280	45	M10	200	83
SPL3-65	13	590	320	135	220	255	45	M10	200	76
SPM3-65	13	615	345	135	245	280	45	M10	200	85
SPH3-65	15	695	335	180	280	325	55	M12	250	117
SPL3-80	13	615	345	135	245	280	45	M10	200	88
SPM3-80	15	695	335	180	280	325	55	M12	250	122
SPH3-80	15	730	370	180	305	350	55	M12	250	140
SPL3-100	15	695	335	180	280	325	55	M12	250	136
SPM3-100	15	730	370	180	305	350	55	M12	250	155
SPH3-100	20	930	470	230	380	435	70	M16	315	243
SPL3-125	20	850	410	220	330	385	70	M16	315	223
SPM3-125	20	930	470	230	380	435	70	M16	315	270

■ Assembly drawing

● SPL-150 11kW



Flange dimensions: JIS 10K thin flange or equivalent

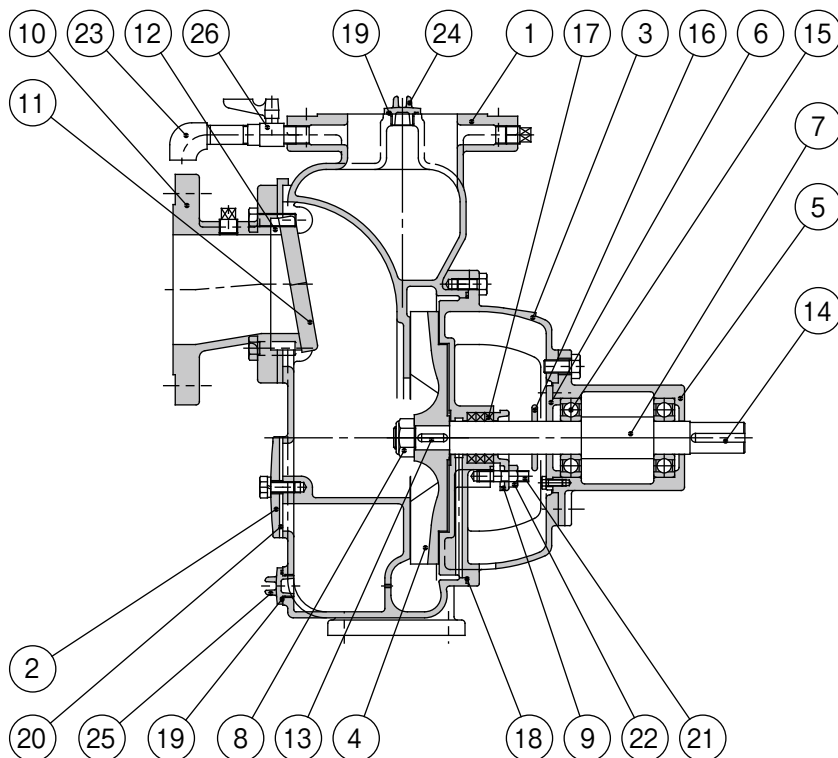


Note) Total length dimension and approximate mass may vary slightly depending on the motor manufacturer.

Approximate mass: 348kg

Sectional drawing

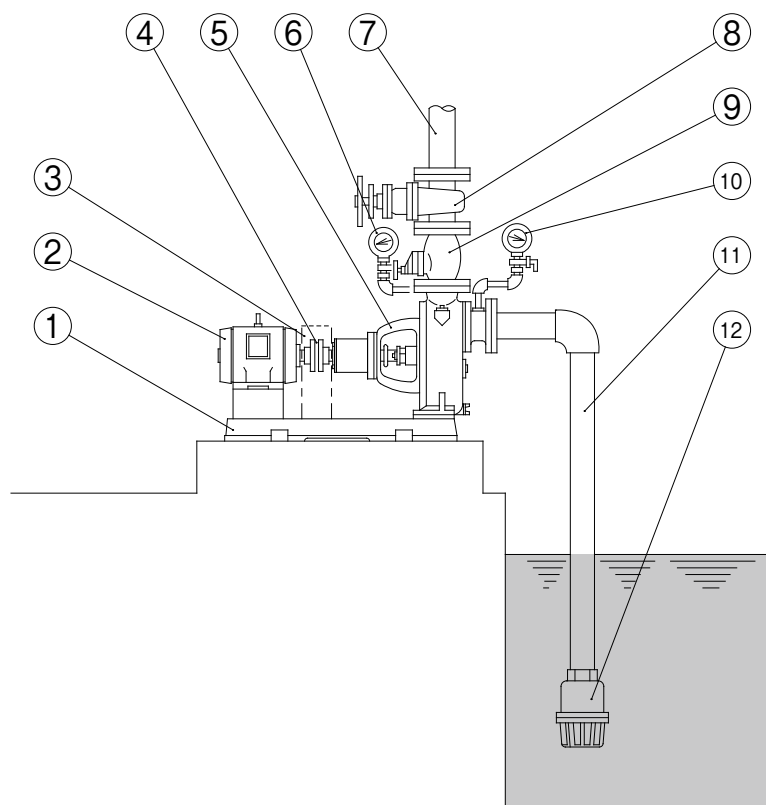
● SPH3-40, SPM3-50, SPH-3-50, SPL3-65, SPM3-65, SPH3-65,
SPL3-80, SPM3-80, SPH3-80, SPL3-100, SPM3-100



Parts list

No.	Part name	Qty	Materials
1	Casing	1	FC200
2	Inspection cover	1	FC200
3	Casing cover	1	FC200
4	Impeller	1	FC200
5	Bearing case	1	FC200
6	Bearing cover	1	FC200
7	Spindle	1	SUS403
8	Impeller nut	1	SUS304
9	Gland flange	1	CAC202
10	Suction port	1	FC200
11	Flap valve	1	NBR+SS400
12	Flap valve seat	1	CAC203
13	Key	1	SUS304
14	Key	1	S45C
15	Ball bearing	2	SUJ2
16	Draining flange	1	CR
17	Gland packing	3	-
18	O-ring	1	NBR
19	O-ring	2	NBR
20	Seat packing	1	NBR
21	Stud bolt	2	SUS304
22	Hexagon bolt	2	SUS304
23	Elbow	1	FCMW
24	Pump-priming plug	1	CAC202
25	Drainage plug	1	CAC202
26	Exhaust valve	1	C3604BD

Self-suction pump installation drawing



Parts list

No.	Name
1	Common base
2	Motor
3	Coupling cover
4	Coupling
5	Pump
6	Pressure gauge
7	Discharge pipe
8	Sluice valve
9	Check valve
10	Compound gauge
11	Suction pipe
12	Strainer

Your Dealer

TERAL

TERAL INC.

Head Office 230, Moriwake, Miyuki-cho, Fukuyama-city, Hiroshima, 720-0003, Japan Tel.+81-84-955-1111 Fax.+81-84-955-5777
www.teral.net

TERAL ASIA LTD.

Room 1001, 10/F, Olympia Plaza, 255 King's Road, North Point, Hong Kong Tel.+852-2571-0886 Fax.+852-2571-0619

TERAL THAI CO., LTD.

TERAL TRADING & SERVICE CO., LTD.

150 Moo 16 Udomsoraryuth Rd., T.Bangkrasan, A.Bangpa-In, Ayutthaya 13160 Thailand Tel.+66-3522-0640 Fax.+66-3522-1259

TERAL GENERAL MACHINE (SHANGHAI) CO., LTD.

No.285, Yuan Qu Road(N), Bei Qiao, Min Hang District, Shanghai 201109, China Tel.+86-21-6490-9128 Fax.+86-21-6490-9126